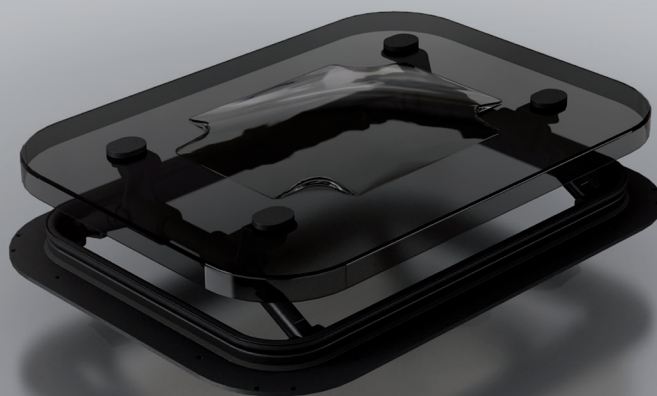


24/93

BOTOLA

ROOF HATCH



CARATTERISTICHE STANDARD

- Applicazione: Aerazione;
- Dispositivi di apertura: 2 manuali in alluminio anodizzato e tecnopolimeri stampati;
- Dimensioni d'ingombro telaio: 355x505 mm;
- Coperchio standard in metacrilato termoformato semitrasparente;
- Telaio di fissaggio in materiale plastico PA.

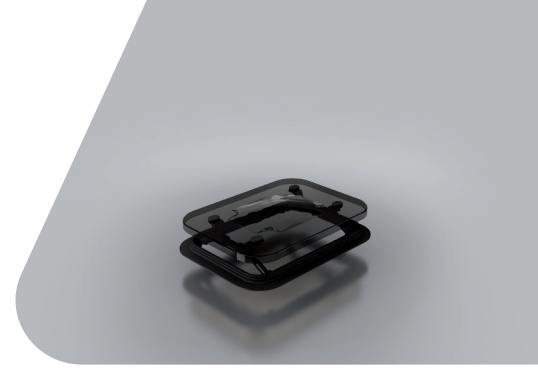
STANDARD FEATURES

- Application: Ventilation;
- Opening device: 2 manual arms in anodized aluminum and injected techno-polymers;
- Roof-aperture for assembly frame: 355x505 mm;
- Standard dome in thermoformed semitransparent metacrylate;
- Assembly frame in plastic.

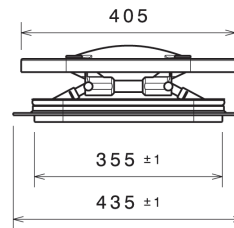
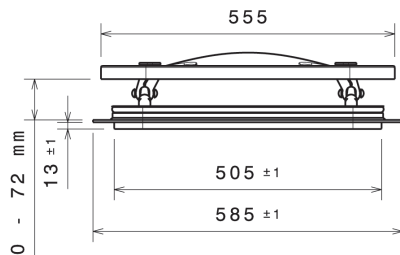
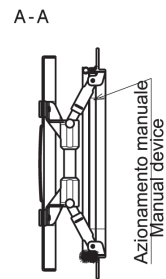
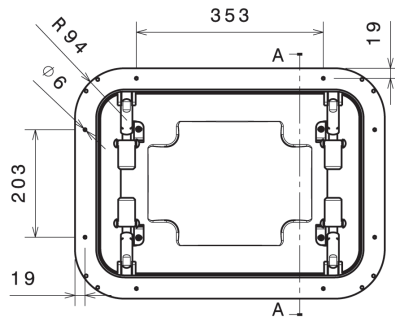
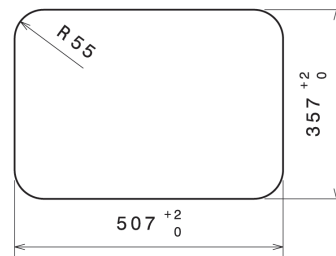
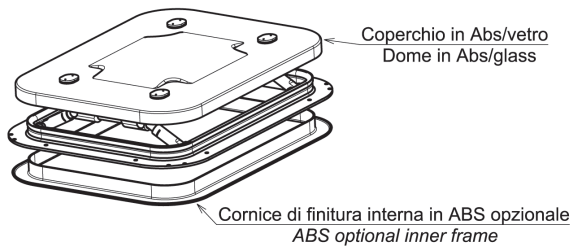




VISUALIZZA IL PRODOTTO SUL SITO
VIEW THE PRODUCT ON WEBSITE



DIMENSIONI SEDE PER BOTOLA Size for hatch housing



LAM S.p.A.
Via Guido Rossa, 4 - 41057 Spilamberto (MO) - Italy
Tel. +39 059 784392 - Fax +39 059 8638048
www.lamspa.it

ISO 9001:2015
IATF 16949:2016
ISO 14001:2015

