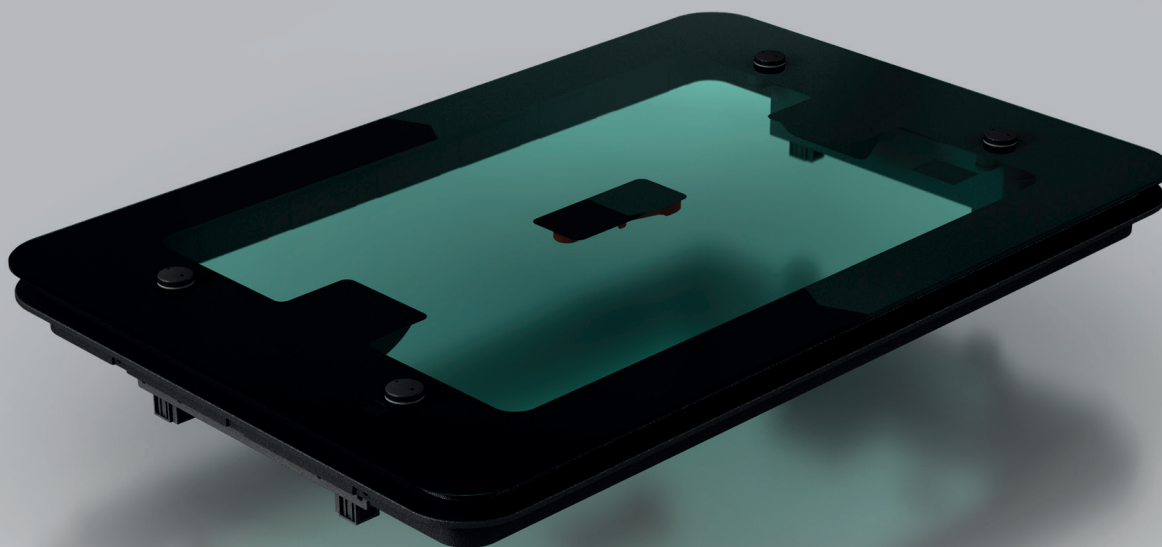


hyper19 H | MG



BOTOLA

ROOF HATCH



CARATTERISTICHE STANDARD

- Applicazione: Aerazione + Emergenza;
- Dispositivi di apertura: 2 azionamenti manuali a torretta;
- Dimensioni d'ingombro telaio 970x630 mm;
- Coperchio in cristallo 5 mm omologato ECE-R 43;
- Telaio di fissaggio in materiale plastico PA;
- Omologazione R118;
- Rispetta la direttiva per uscita di emergenza R107;
- Cavo di sicurezza in acciaio.

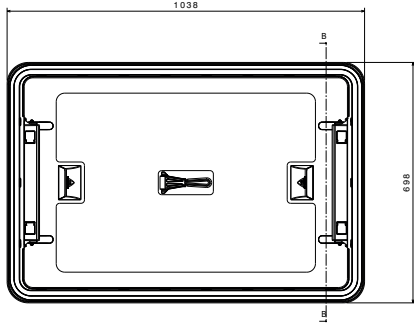
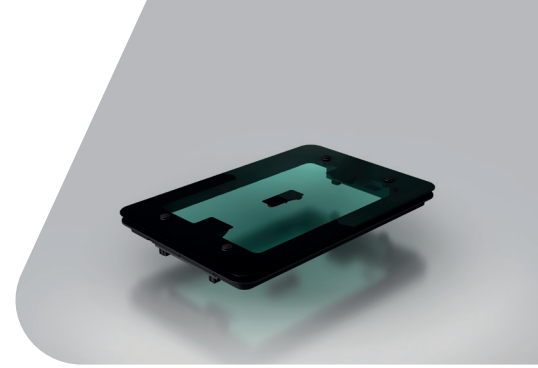
STANDARD FEATURES

- Application: Ventilation + Emergency Exit;
- Opening device: 2 manual ventilation arms;
- Roof aperture 970x630 mm;
- Dome in glass 5 mm homologated according to ECE-R 43;
- Assembly frame in PA plastic materials;
- Homologated according to R118;
- Complying with the directive R107 for Emergency Exit;
- Steel safety cable.





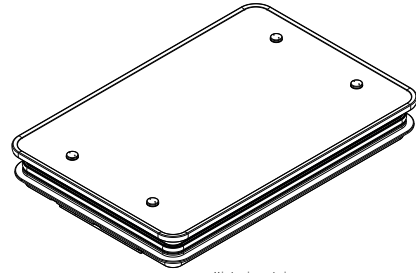
VISUALIZZA IL PRODOTTO SUL SITO
VIEW THE PRODUCT ON WEBSITE



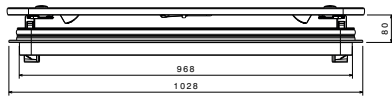
Vista frontale
Scala: 1:5



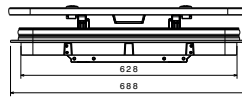
Vista in sezione B-B
Scala: 1:5



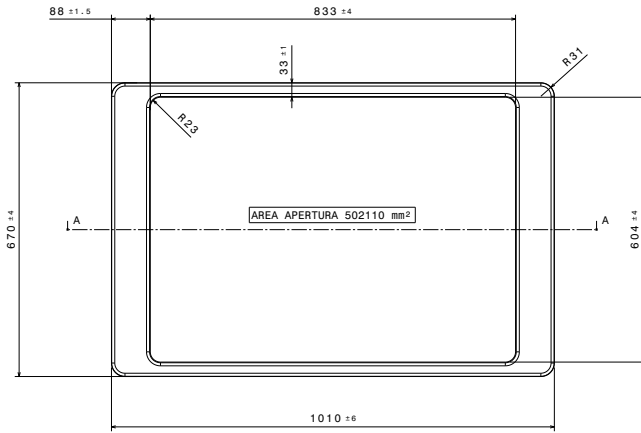
Vista isometrica
Scala: 1:5



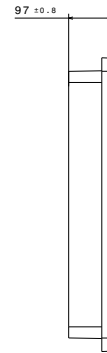
Vista dall'alto
Scala: 1:5



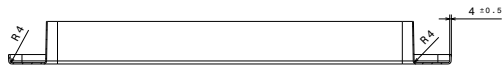
Vista ausiliaria A
Scala: 1:5



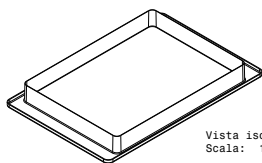
Vista frontale
Scala: 1:5



Vista da sinistra
Scala: 1:5



Vista in sezione A-A
Scala: 1:5



Vista isometrica
Scala: 1:10

Cornice interna
Interior frame

www.lamspa.it



LAM S.p.A.
Via Guido Rossa, 4 - 41057 Spilamberto (MO) - Italy
Tel. +39 059 784392 - Fax +39 059 8638048
www.lamspa.it

ISO 9001:2015
IATF 16949:2016
ISO 14001:2015

