

MC2/MC2M6

TENDA A RULLO

ROLLER BLIND



CARATTERISTICHE STANDARD

- Con aste guida dritte in alluminio anodizzato nero;
- Bloccaggio della barra di manovra in tutte le posizioni;
- Dispositivo con corda di sganciamento a DX o SX da specificare in ordine;
- Fissaggio a parete o a soffitto senza alcuna modifica.

STANDARD FEATURES

- With straight guide rods in black anodized aluminum;
- Pull rod stopping in every position;
- Ratchet lever with cord on RH or LH side to be specified on the order;
- Wall or roof mounting without any modification.

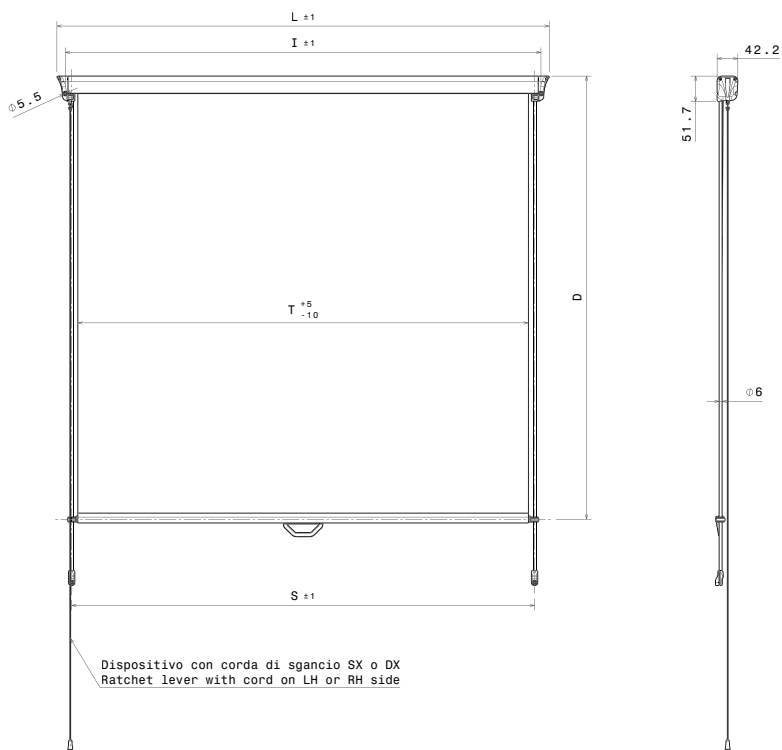




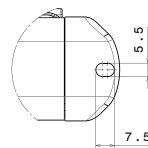
VISUALIZZA IL PRODOTTO SUL SITO
VIEW THE PRODUCT ON WEBSITE



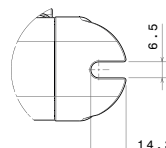
www.lamspa.com



Dett. A: Mod. MC2

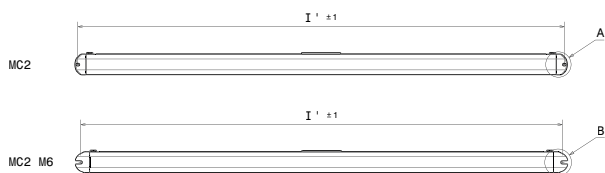


Dett. B: Mod. MC2 M6



	MC2 (mm)	MC2 M6 (mm)
L	$380 \leq L \leq 2500$	$390 \leq L \leq 2500$
D	*	*
I	L - 34	L - 47
I'	L - 12	L - 22
T	L - 86	L - 98
S	L - 60	L - 73

* "D" Contattare il dipartimento tecnico
"D" Please contact the technical department



LAM S.p.A.
Via Guido Rossa, 4 - 41057 Spilamberto (MO) - Italy
Tel. +39 059 784392 - Fax +39 059 8638048
www.lamspa.it

ISO 9001:2015
IATF 16949:2016
ISO 14001:2015

